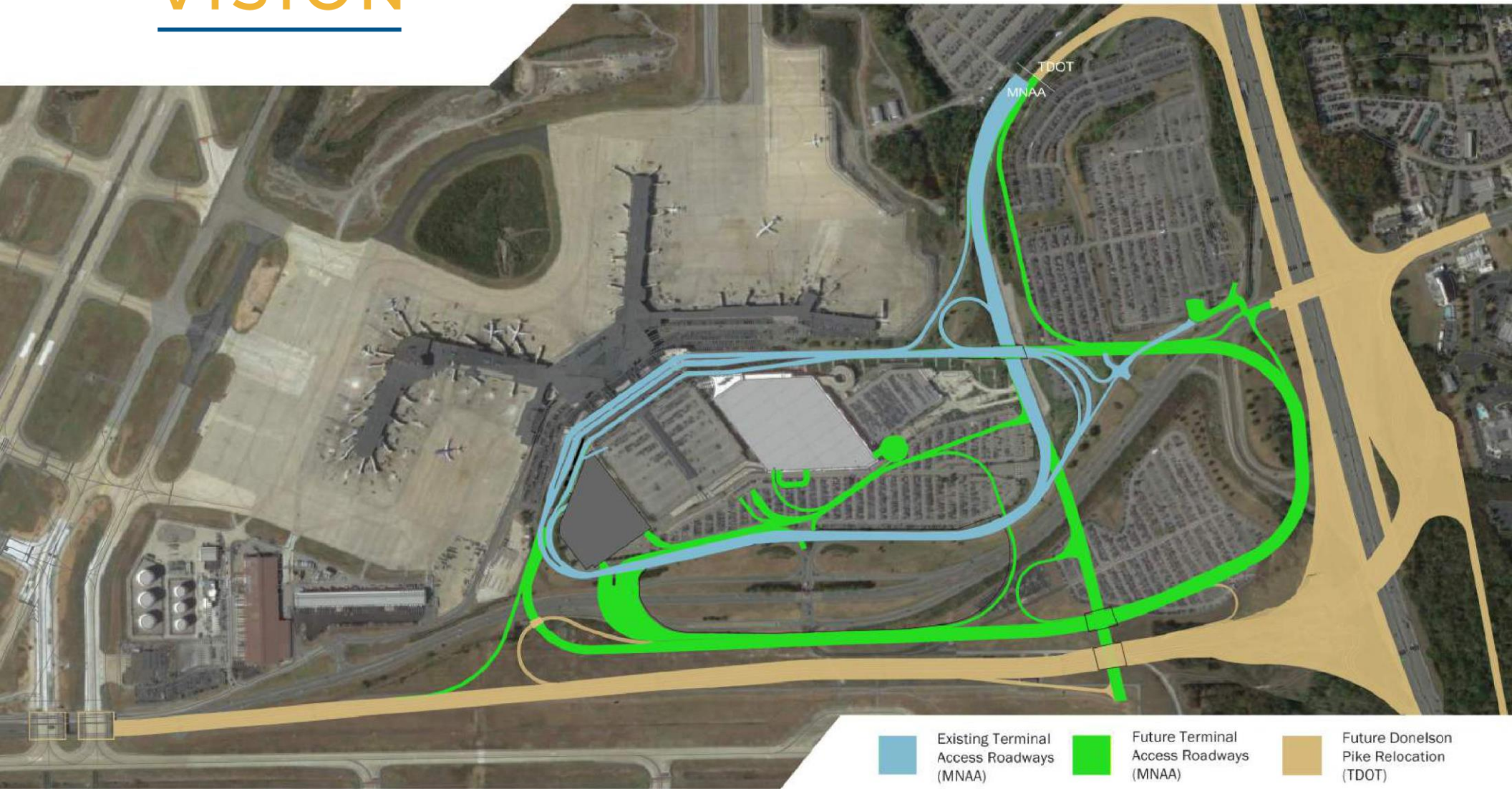


Donelson Pike Relocation & Terminal Access Roadway Improvements



BNA VISION

By 2041, the population of the Greater Nashville Area is expected to surpass 2.5 million people, and BNA passenger traffic will grow from 16 million today to more than 23 million. *BNA Vision* is the airport's comprehensive plan to meet the needs of this record-setting growth and maintain the customer-friendly character unique to Nashville and our region.

Traffic congestion at BNA is already noticeable at peak times. Without improvements, the results will be significant back-ups by 2023 and gridlock by 2028. With traffic and airport utilization continuing to rise, the Donelson Pike Relocation and Terminal Access Roadway Improvement projects are vital to improving access to and circulation around BNA.



DONELSON PIKE RELOCATION & TERMINAL ACCESS ROADWAY IMPROVEMENTS

- **Donelson Pike Relocation, a Tennessee Department of Transportation project, will:**
 - Straighten Donelson Pike from taxiway bridges to I-40
 - Improve safety
 - Enhance airport access to and from I-40 East and West
 - **Terminal Access Roadway Improvements (TARI) currently under design by MNAA will include:**
 - Expanding terminal loop roadway from **1.3 miles to 1.9 miles**
 - Increasing roadway travel lanes and improving access
 - **Total TARI Project Budget: \$90 million**
-
- **Project Timeline:**
 - Construction start: **Mid-2020**
 - Construction completion: **Mid-2023**



Nashville International Airport as it will look in 2023. *Conceptual image*



This project is necessary to prepare for rising regional traffic and airport utilization anticipated in 2023 and beyond.