

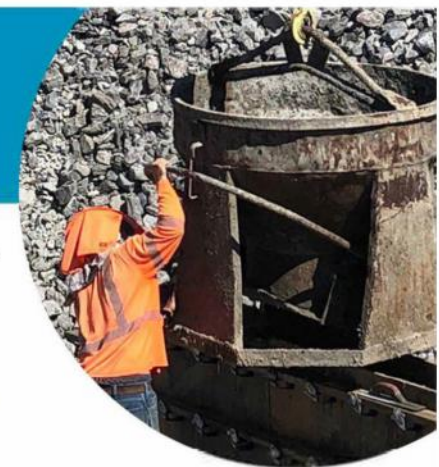
BNA VISION

TERMINAL APRON AND TAXILANE EXPANSION



PROJECT SUMMARY REPORT

January 2019



AT A GLANCE

- Massive fill project with **62,000+** dump truck loads of material being deposited into a **50-foot depression** near the terminal
- Resulting space will total more than **500,000 square feet** (more than **13 acres**)
- Added space will accommodate construction of BNA's new International Arrivals Facility (IAF)
- Project is being implemented in two phases:
 - **Phase 1:** Fill the depression and place asphalt. Completion: **Summer 2019**
 - **Phase 2:** Pave the space with concrete, which provides additional room for aircraft to park and maneuver when the IAF opens. Completion: **2023**
- Phase 1 design by **Garver**
- Phase 1 construction by **Eutaw Construction Company**

% Fill Deposited



550 Loads Deposited = 6,325 Cubic Yards (CY)
1% of Total Fill

1 LOAD = 11.5 CY

62,000 TOTAL LOADS = 632,500 CY

TOTAL PROJECT BUDGET

- Phase 1: \$26 million
- Phase 2: \$18 million (not yet awarded)
- Total: \$44 million

PROGRESS¹

- % of Fill Deposited, To Date: **80%**
- # of Dump Truck Loads of Fill Deposited, To Date: **49,900**
- Weight of Fill Deposited, To Date: **816,400 tons**
- Loads Deposited Per Day, To Date: **250**

SMWBE PARTICIPATION²

	GOAL	ACHIEVED	PROJECTED
Design			
WBE	11.48%	10.93%	11.48%

Construction

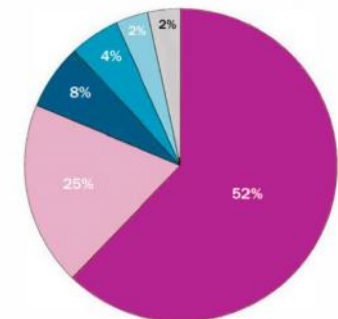
	GOAL	ACHIEVED	PROJECTED
DBE	7.00%	4.80%	7.00%
WBE	6.01%	4.69%	6.01%

WORK FORCE³

- Total # of Workers: **48**
- Regional Labor: **42%**
- Total Hours Worked: **62,000**

WORK FORCE BY COUNTY

- OTHER
- DAVIDSON
- WILLIAMSON
- RUTHERFORD
- ROBERTSON
- SUMNER



MATERIALS⁴

- % Regional Materials Used: **100%**
- Sources of Fill:
 - BNA Stockpile
 - Local Middle Tennessee Quarry

¹ As of 12/31/2018 ² As of 12/31/2018 ³ As of 12/31/2018 ⁴ As of 1/9/2019



Nashville International Airport



Learn more at BNAVision.com

BNA
VISION