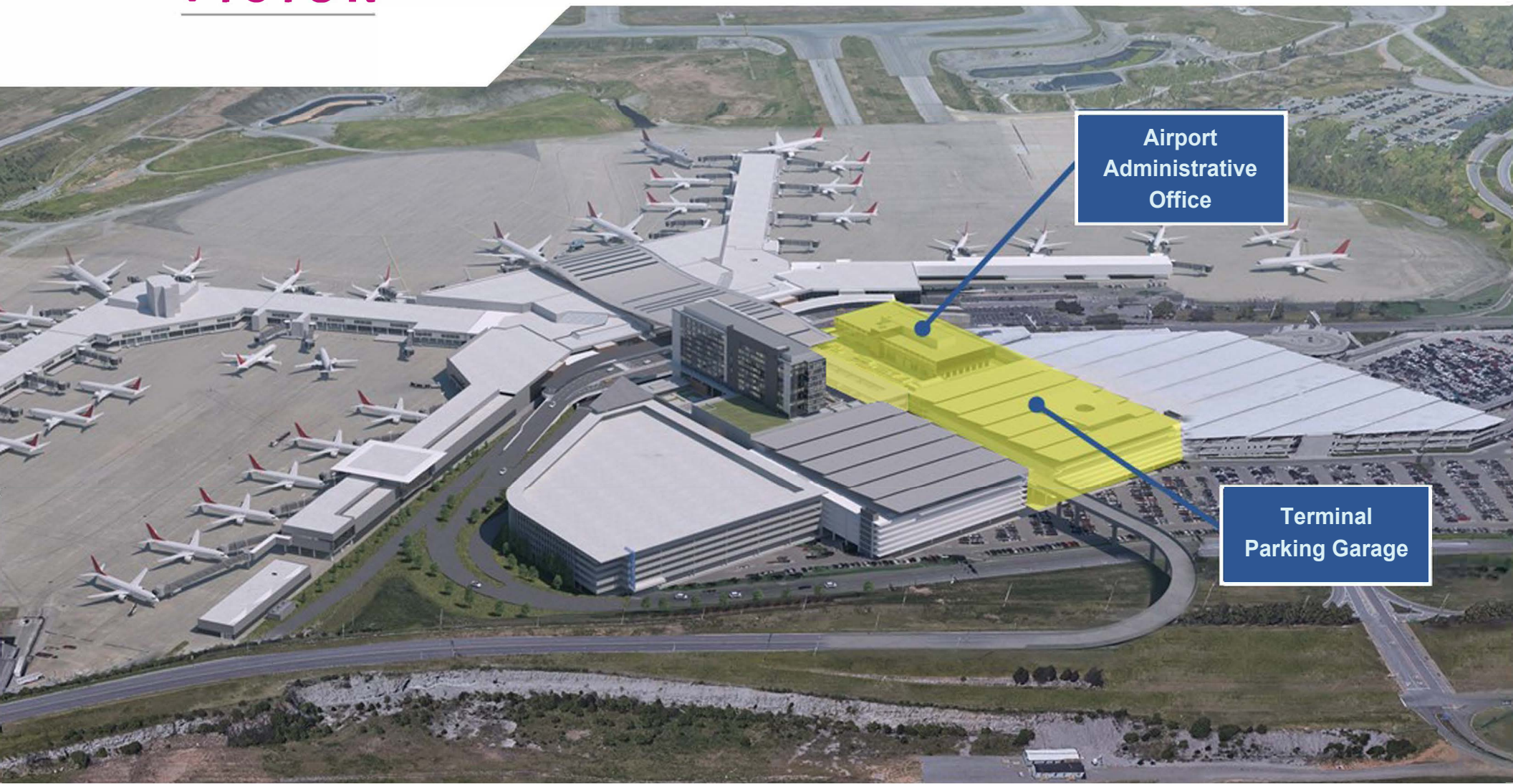


TERMINAL PARKING GARAGE & AIRPORT ADMINISTRATIVE OFFICE



BNA

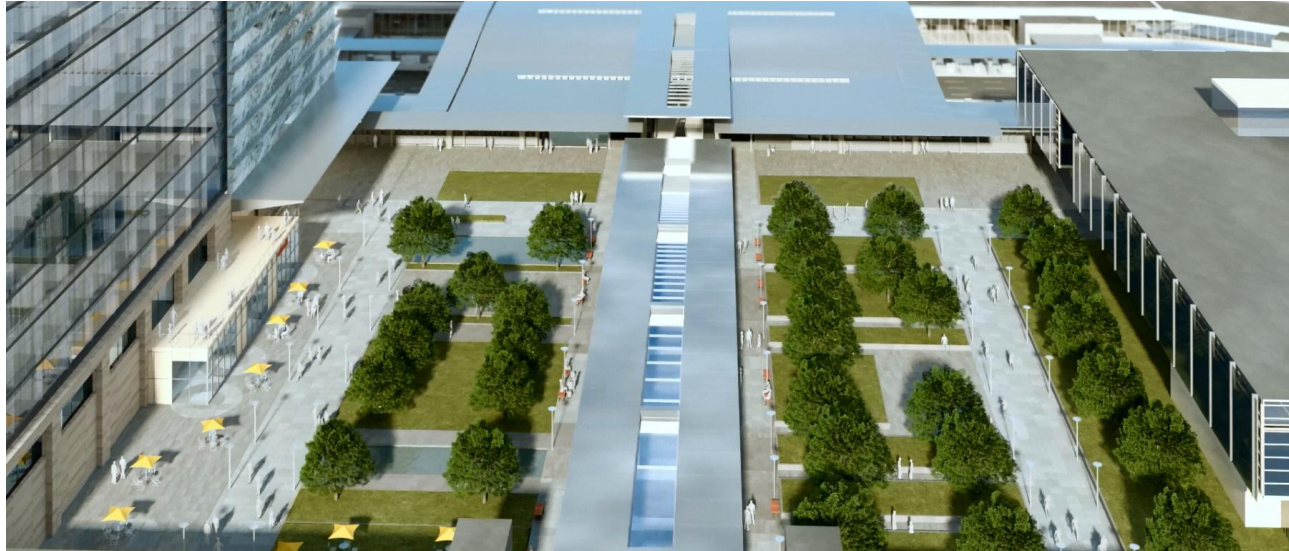
VISION

By 2041, the population of the Greater Nashville Area is expected to surpass 2.5 million people, and BNA passenger traffic will grow from 15 million today to more than 23 million. BNA Vision is the airport's comprehensive plan to meet the needs of this record-setting growth and maintain the customer-friendly character unique to Nashville and our region.

The Terminal Parking Garage & Airport Administrative Office project will add thousands of short-term parking spaces for travelers' convenience, as well as a new airport administrative office. It will be built on the site of the existing Short Term Parking Garage, which is set to be demolished after BNA's new Parking and Transportation Center opens this fall.



The existing Short Term Parking Garage will be demolished to make way for much more parking and other amenities.



TERMINAL PARKING GARAGE & AIRPORT ADMINISTRATIVE OFFICE

- 6 levels of parking
 - 3,000 spaces
 - Plaza with green space, covered walkway, public art and more
 - 64,000-square-foot office building for the Metropolitan Nashville Airport Authority (MNA), TSA and other airport services
 - Sustainable design: Pursuing Parksmart and LEED certifications
- Design-build team: Messer Construction and Moody Nolan
 - Project timeline:
 - Demolition of Short Term Parking Garage set to begin Late 2018
 - Construction to begin Early 2019
 - Parking garage anticipated opening: Late 2019
 - Airport administrative office anticipated opening: Fall 2020

