

## Concourse D & Terminal Wings Expansion



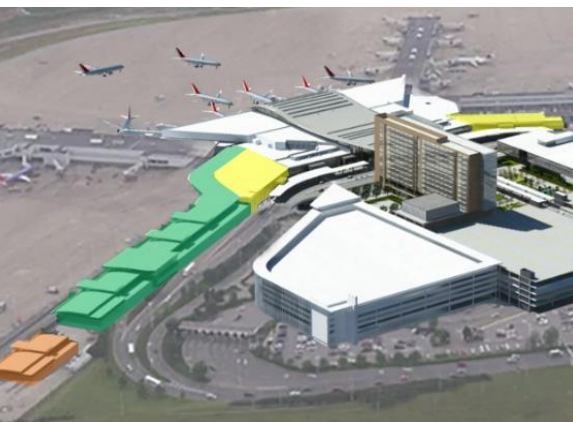


# Progress Summary Report

October 2019



Glazing continues at Concourse D.



Central Utility Plant    Concourse D  
Terminal Wings Expansions

## At A Glance

- Total square footage for both projects: **315,000 square feet**
- New, **115,000-square-foot** Concourse D
- **6** new domestic aircraft gates
- New **dining** and **retail**
- Terminal Wings Expansion:
  - **200,000 square feet** of new space
  - Expanded **Ticketing Lobby** and **Baggage Claim**
- Remodeling of existing **136,000 square feet** of terminal space
- **11,000-square-foot Central Utility Plant**
- Sustainability: On track for **LEED Silver Certification**
- Design and construction by the **Hensel Phelps/Fentress Team**



South Terminal Wing steel will be complete in late October.

## Total Project Budget

- \$292 million

## Progress <sup>1</sup>

- Construction of **Concourse D** and **Terminal Wings** underway
- The **Central Utility Plant** is operational
- Total tons of steel to be used by completion: **2,200 tons**
- Tons of steel erected, to date: **1,807 tons**
- Pieces of steel erected, to date: **2,946 of 3,296**
- Concourse D completion: **Summer 2020**

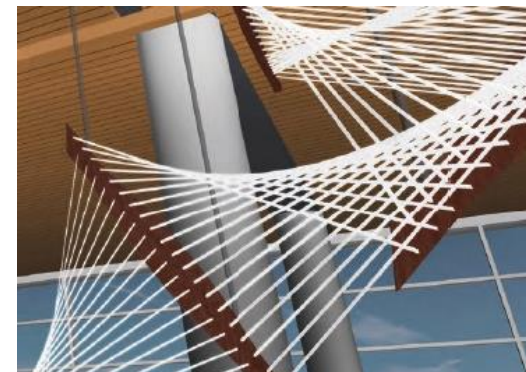
## SMWBE Participation <sup>2</sup>

	GOAL	ACHIEVED
<b>MBE PARTICIPATION</b>	<b>6.29%</b>	<b>5.22%</b>
<b>WBE PARTICIPATION</b>	<b>9.13%</b>	<b>2.37%</b>
<b>SBE PARTICIPATION</b>	<b>4.0%</b>	<b>3.32%</b>

- Paid to Date: **\$28.4 million**

## Work Force <sup>3</sup>

- Total # of workers: **1,254**
- Total hours worked: **369,910**



"Lyrical Journeys," an interactive public art work, will be suspended from the ceiling in the node of Concourse D.

<sup>1</sup> As of 10/1/2019    <sup>2</sup> As of 8/31/2019    <sup>3</sup> As of 8/31/2019